

PART OF N.W. 1/4 SEC. 36, T.6N., R.2W., S.L.B. & M.

159

OGDEN COMMERCIAL & INDUSTRIAL PARK, PLAT "D"

LOT 71

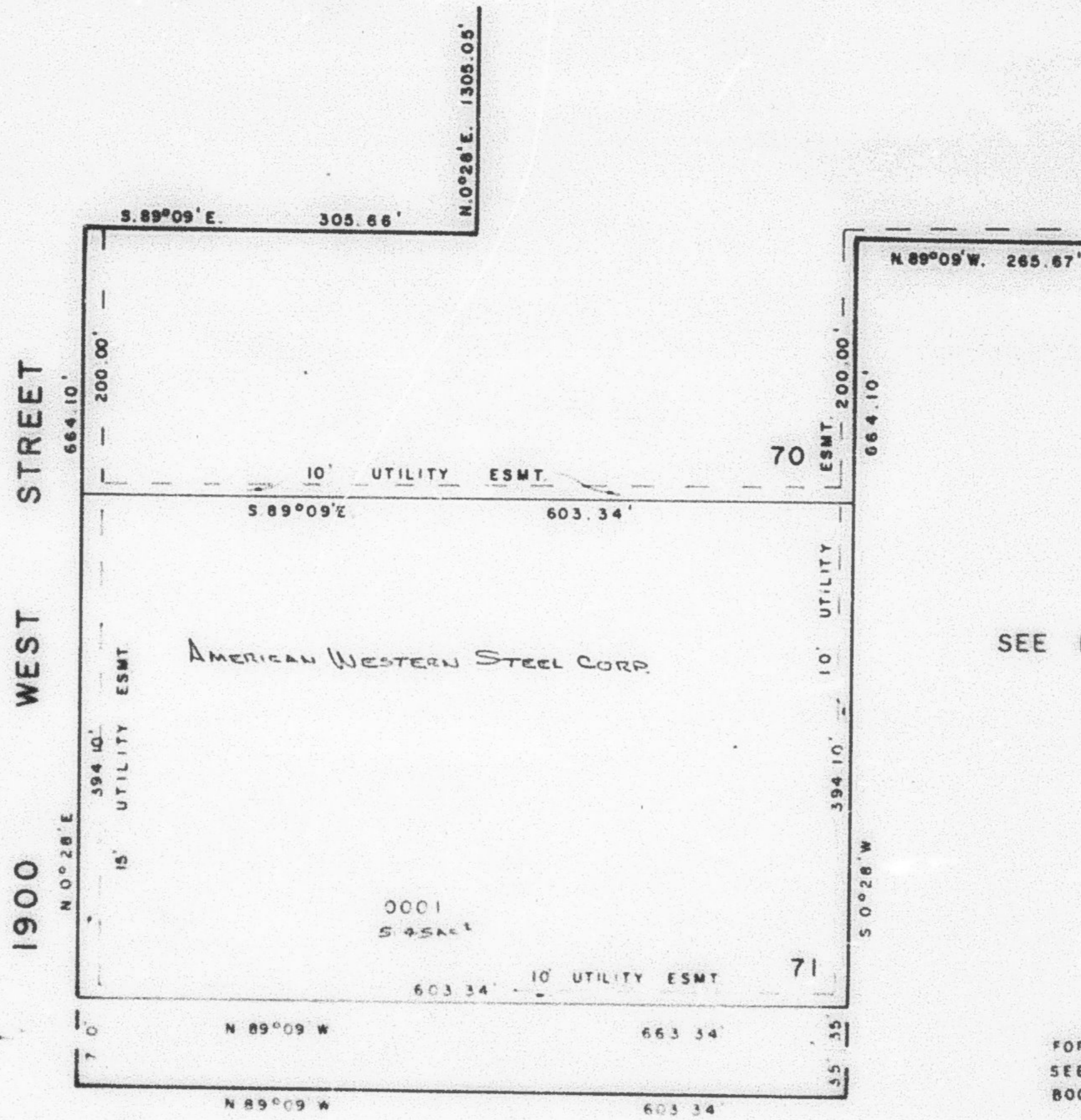
IN OGDEN CITY

SCALE 1"=100'

TAXING UNIT: 22

PREFIX: 15-159

SEE PAGE 94



SEE PAGE 94

SEE PAGE 103

SEE PAGE 103

FOR COMPLETE ENG DATA
SEE ORIG DED PLAT IN
BOOK 23, PAGE 73